

20 BAR CO₂ RANGE

MODEL	FLOW	MOTOR		CYLINDERS	STAGES	FRAME	FOOTPRINT
	kg/h	kW	HP	mm			m ²
e ^{COO} 170	170	19	25	220/120	2	V-type	1,09x2,17
e ^{COO} 200	200	22	30	220/120	2	V-type	1,09x2,17
e ^{COO} 300	300	37	50	220x2/120x2	2	V-type	1,09x2,17
e ^{COO} 400	400	45	60	220x2/120x2	2	V-type	1,09x2,17
e ^{COO} 500	500	45	60	245x2/170/120	3	V-type	1,09x2,17
e ^{COO} 600	600	55	75	245x2/170/120	3	V-type	1,09x2,17
e ^{COO} 900	900	75	100	320/160	2	Boxer	1,35x3,90
e ^{COO} 1000	1.000	90	125	320/160	2	Boxer	1,35x3,90
e ^{COO} 1300	1.300	110	150	320/160	2	Boxer	1,35x3,90
e ^{COO} 1600	1.600	132	180	320x2/160x2	2	Boxer	1,90x3,94
e ^{COO} 2000	2.000	160	220	320x2/160x2	2	Boxer	1,90x3,94
e ^{COO} 2400	2.400	200	270	320x2/160x2	2	Boxer	1,90x3,94
e ^{COO} 2600	2.600	250	340	320x2/160x2	2	Boxer	1,90x3,94
e ^{COO} 3000	3.000	250	340	320x3/160x3	2	Boxer	2,28x4,50
e ^{COO} 3400	3.400	280	380	320x3/160x3	2	Boxer	2,28x4,50
e ^{COO} 3800	3.800	315	425	320x3/160x3	2	Boxer	2,28x4,50
e ^{COO} 4000	4.000	355	480	320x3/160x3	2	Boxer	2,28x4,50

Catalogue data: 400V/50Hz, saturated CO₂, for inlet 1,013 bara, outlet 20 bara.
Max. standard suction pressure 1,3 bara.
For other specifications contact ABC.



e^{COO} 4000

WORLDWIDE
TECHNICAL
SERVICE
SUPPORT



TAYLOR MADE SOLUTIONS

CONFIGURATION

Piston compressors with up to 3 pairs of double-acting cylinders, with or without lubrication. Up to 6 stages of compression, mounted on a structural steel skid.

GASES

Air, Hydrogen, Nitrogen, Methane, Carbon dioxide, Freon, Natural Gas, Vinyl chloride, Methyl chloride, Ethylene, Propylene, Sulphur dioxide, Butadiene, Isobutene, Isobutane, Butane, Propane, Carbon monoxide, Synthesis gas, Biogas and Syngas... except for Oxygen and Acetylene.

POWER

Up to 1.200 kW

PRESSURE

Up to 150 bar



SALES & SERVICE NETWORK



MAIN OFFICES

AMERICA

Miami USA
Mexico City MEXICO
Caracas VENEZUELA
Bogotá COLOMBIA
Guayaquil ECUADOR
Havana CUBA
Lima PERU
Santiago CHILE
São Paulo Itupeva BRASIL

EUROPE

Eibar SPAIN
Lyon FRANCE
Schwerin GERMANY
Belgrade SERBIA
Istanbul TURKEY
Moscow RUSSIA

AFRICA & MIDDLE EAST

Casablanca MOROCCO
Tunis TUNISIA
Johannesburg SOUTH AFRICA
Accra GHANA
Tehran IRAN
Dubai UNITED ARAB EMIRATES

ASIA

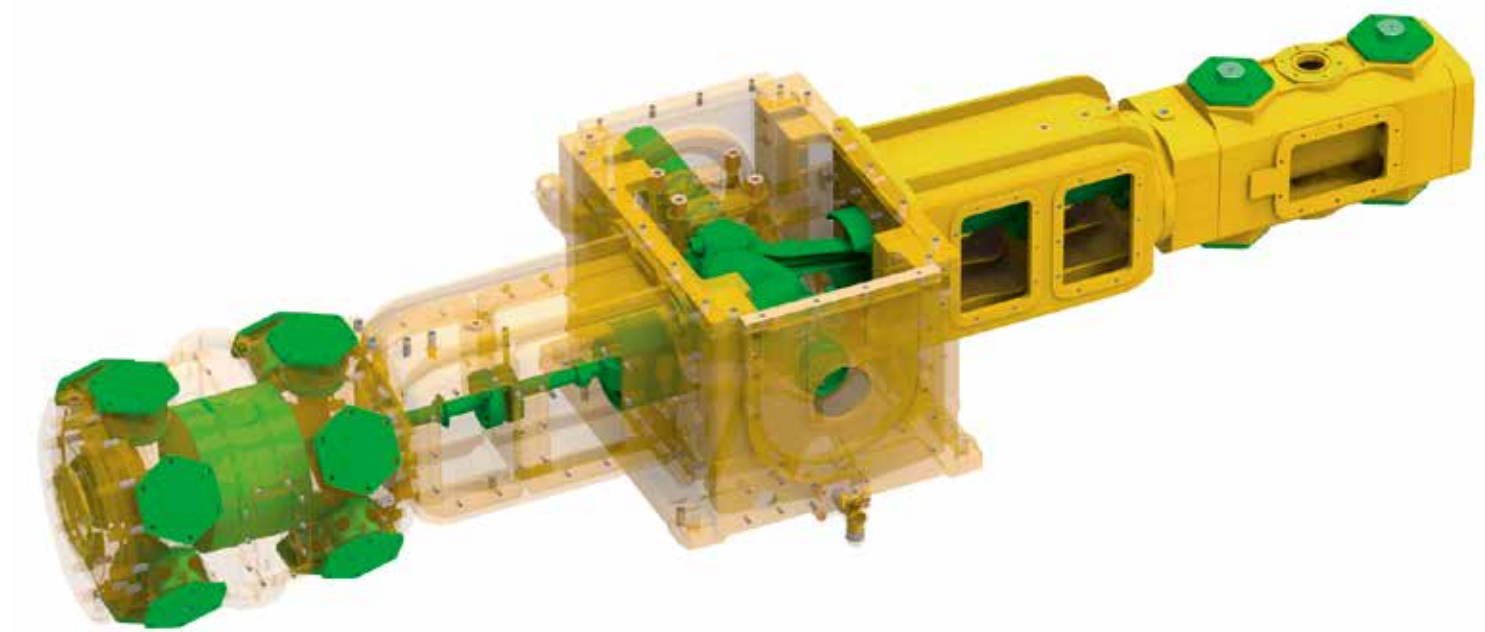
Shanghai-Wujiang CHINA
Tokio JAPAN
Pune INDIA
Bangkok THAILAND
Ho Chi Minh VIETNAM
Jakarta INDONESIA
Manila PHILIPPINES
Karachi PAKISTAN
Dhaka BANGLADESH
Yangon MYANMAR

HEADQUARTERS

Eibar
Pol. Ind. Azitain nº6
20600 EIBAR (Guipúzcoa) SPAIN
T.: +34 943 820 400
abc@abc-compressors.com
www.abc-compressors.com

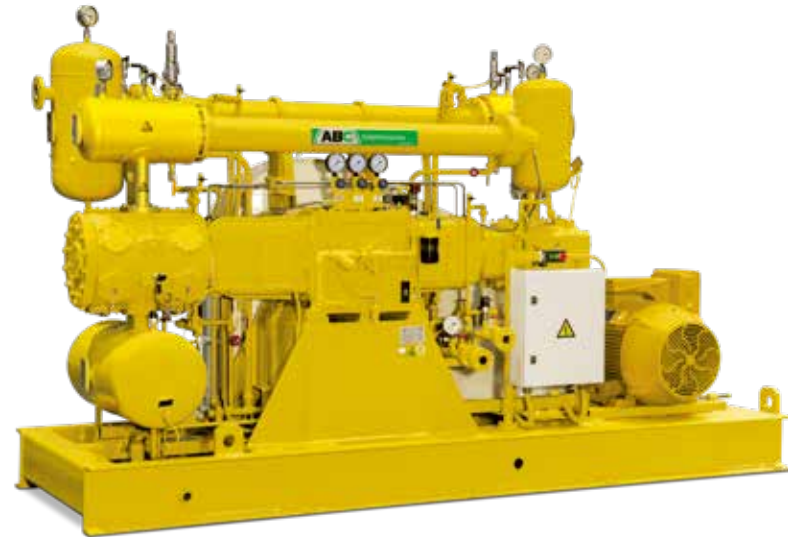


RELIABLE BEYOND LIMITS



ABC IN CO₂ INDUSTRY

Since the early 70's, ABC manufactures a wide range of CO₂ compressors: from the CO₂ recovery for breweries, to a variety of applications for gas producers. In close cooperation with engineering companies, ABC compressors are customized according to the project requirements, delivering complete units: compressor and electric cabinet on skid or bare compressors to be packaged by the engineering company responsible for the turn-key system.



▲ eCOO 1300

EFFICIENT DESIGN

- Cylinders are horizontally opposed, with crankpins displaced by 180°, cancelling out the inertia loads.
- Virtually without vibrations.
- Longer life of mechanical parts as they do not transmit excessive force or produce fatigue on structural parts of the compressor, 20 years machine lifetime.
- No anti-vibration pads or special foundations are required, + 2kg/cm².
- Excellent adaptation to frequency converter up to 55%.
- Double acting.
- Refrigeration / Inter and final coolers.

WORKING WITH
WORLD TOP
BREWERIES



HIGH PERFORMANCE BOXER



▲ eCOO 2600

SOLUTIONS
FOR CO₂
PRODUCTION
PLANTS



REGULATION

0-50-100% STEP REGULATION
provides half of the nominal flow

- Thanks to the all double acting cylinders.
- By using either gas or air.
- Remarkable energy consumption adjustment.
- 0-25-50-75-100% regulation possibility.
- Flip-flop operation option.

VARIABLE SPEED DRIVE, VSD
provides continuous flow adjustment

- Avoids the starting intensity peaks.
- Perfect energy consumption adjustment.
- Reduces the CO₂ balloon size requirements.
- ABC compressors take full advantage of the VSD, as the rotational speed can be reduced to half.

Operation with VSD provides double benefit:
Optimizing the energy consumption when the compressor is not at its full capacity while improving the mechanical and electrical working conditions. It can be retrofitted at a later date.

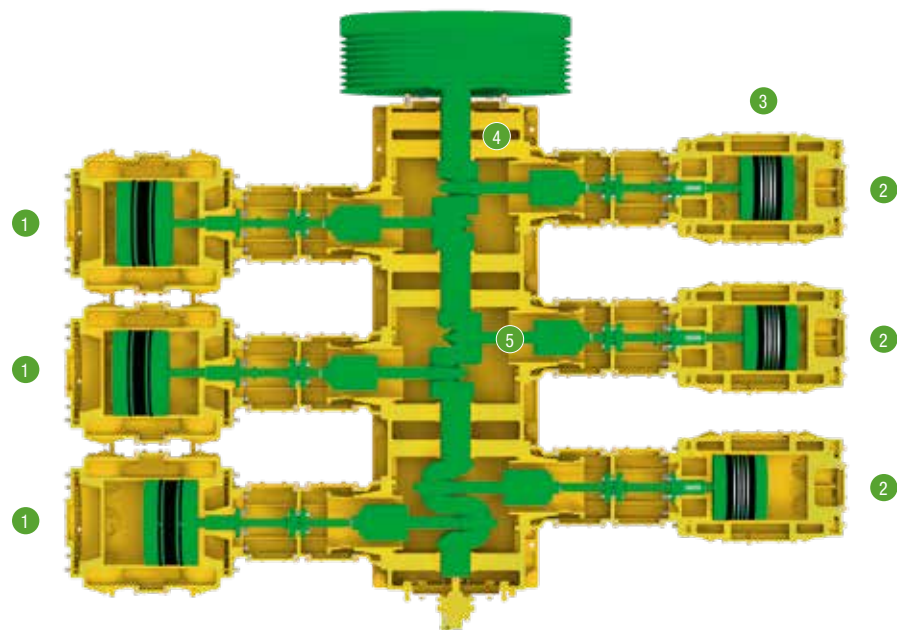
ADDED VALUE IN
FERMENTATION
AND
DESTILLATION
PLANTS



MODULAR DESIGN

100% INTERCHANGEABLE PARTS

ABC CO₂ compressors are designed using interchangeable cylinders. Thanks to that, ABC compressors share the same spare parts, allowing a cost effective and easy maintenance.

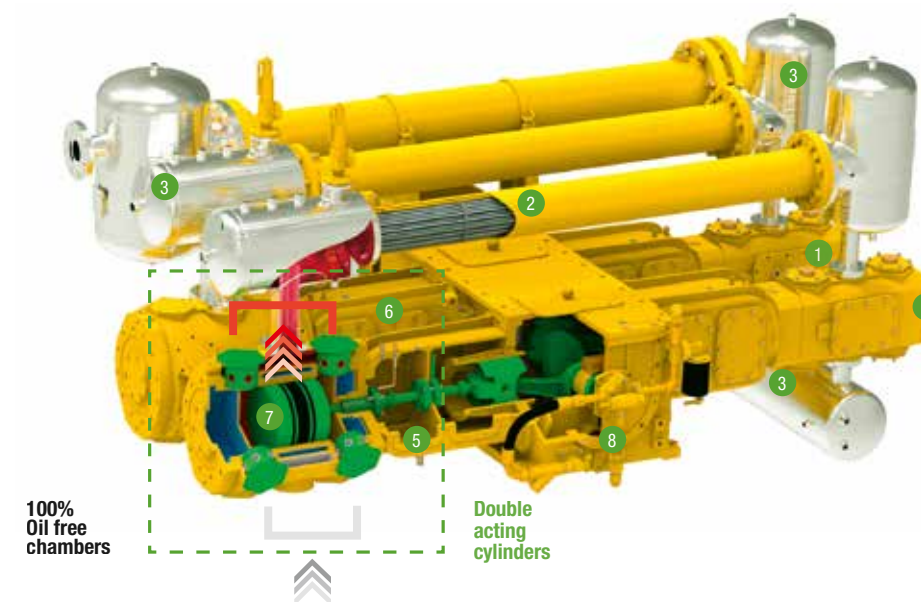


- 1 1st stage of compression
- 2 2nd stage of compression
- 3 Double acting cylinders
- 4 Double friction-bearing support
- 5 Large oil receiver

OIL FREE AND CORROSION PROOF

ABC compressors are totally oil free thanks to long blocks between casing and cylinders: cylinder side chamber is large enough to avoid the piston rod part in contact with the mechanical elements could get in contact with the packing. An oil thrower at the rod avoids the oil to advance along the piston rod.

CO₂ range is prepared to compress saturated gas. The gas circuit, condensates separators and heat exchangers are in stainless steel, avoiding corrosions and providing longer life to parts.

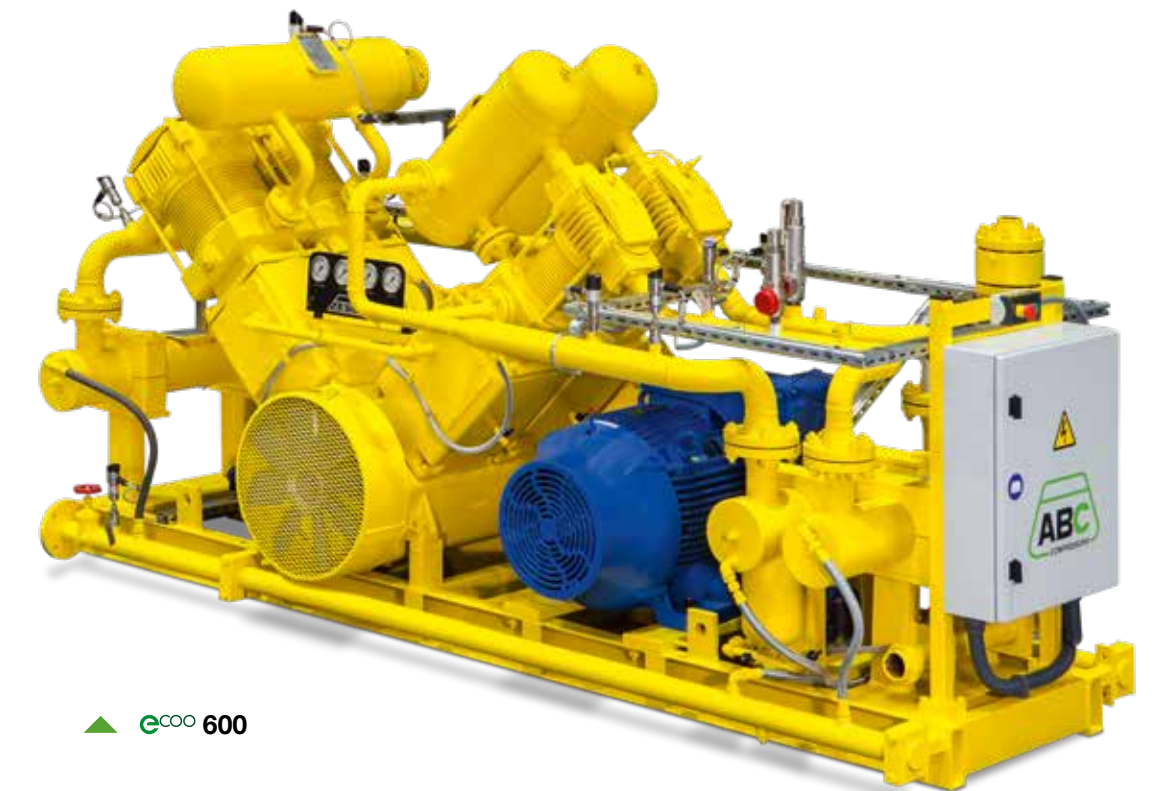


100%
Oil free
chambers

Double
acting
cylinders

- 1 Stainless steel valves
- 2 Inter and after coolers: stainless steel bundles, dilatible, demountable
- 3 Stainless steel separators, dampeners as option
- 4 Cylinders with thermostatic valves
- 5 B-type distance piece assuring completely OIL FREE compression
- 6 CO₂ venting for packings and distance blocks
- 7 Aluminium pistons
- 8 Shaft driven oil pump

COMPACT SOLUTIONS



▲ eCOO 600

Compressor sets specifically developed for smaller flows installations, producing up to 600 kg/h.

- Cost aware conception.
- Requires reduced footprint, suitable for being integrated in self contained packages.
- Compact and simple to be interconnected.
- High energy efficiency.
- V-type cylinders arrangement.
- Single acting operation.
- Three compression stages for better performance and low temperature operation.
- Either air or water cooled inter and after coolers.
- 0-100% regulation.
- Large passage surface valves.
- Gas and lubricating circuits in stainless steel.